

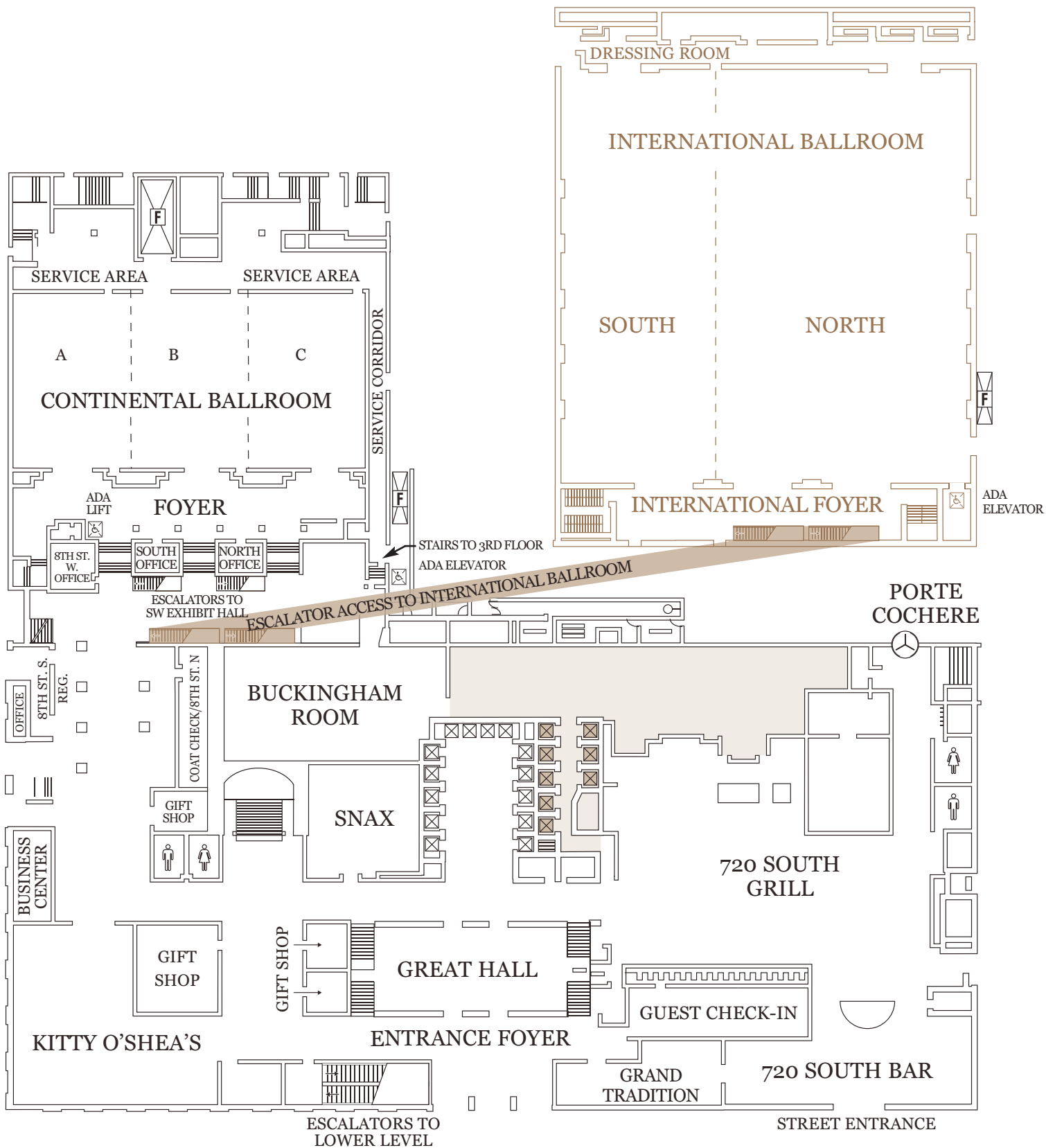


FUNCTION SPACE PLANS





HILTON CHICAGO



LOBBY LEVEL

	DIMENSIONS [L W]	SQUARE FEET °	CEILING HEIGHT	CHANDELIER CL.	THEATER	SCHOOL ROOM 2/6'	SCHOOL ROOM 3/6'	BANQUET 10/60"	RECEPTION	CONFERENCE 2/6'	CONFERENCE 3/6'
CONTINENTAL BALLROOM	144'x70'	10,080	12' 11'2"	1,100	398	597	900	1,350	N/A	N/A	
CONTINENTAL A	48'x70'	3,360	12' 11'2"	350	132	198	300	450	40	58	
CONTINENTAL B	48'x70'	3,360	12' 11'2"	350	132	198	300	450	40	58	
CONTINENTAL C	48'x70'	3,360	12' 11'2"	350	132	198	300	450	40	58	
CONTINENTAL FOYER	144'x25'	3,600	14' 10'5"	N/A	N/A	N/A	N/A	414	N/A	N/A	
CONTINENTAL OFFICES N&S	11'x21'	231	9'	N/A	N/A	N/A	N/A	N/A	N/A	N/A	
8TH ST. S. REG. OFFICE	18'x14'	252	8'4"	N/A	N/A	N/A	N/A	N/A	N/A	N/A	
8TH ST. S. REG. COUNTER	2'2"x32'3"	N/A	8'4"	N/A	N/A	N/A	N/A	N/A	N/A	N/A	
8TH ST. N. REG. OFFICE	41'x17'	697	7'10"	N/A	N/A	N/A	N/A	N/A	N/A	N/A	
8TH ST. W. OFFICE	19'x12'	228	8'11"	N/A	N/A	N/A	N/A	N/A	N/A	N/A	
GRAND TRADITION	24'x68'	1,307	9'4"	85	28	42	60	125	20	28	
BUCKINGHAM ROOM	61'x43'	2,317	10'3"	9'	104	40	60	80	125	24	34

° Usable square footage

ACCESSIBLE 

GUEST ELEVATOR 

SERVICE ELEVATOR 

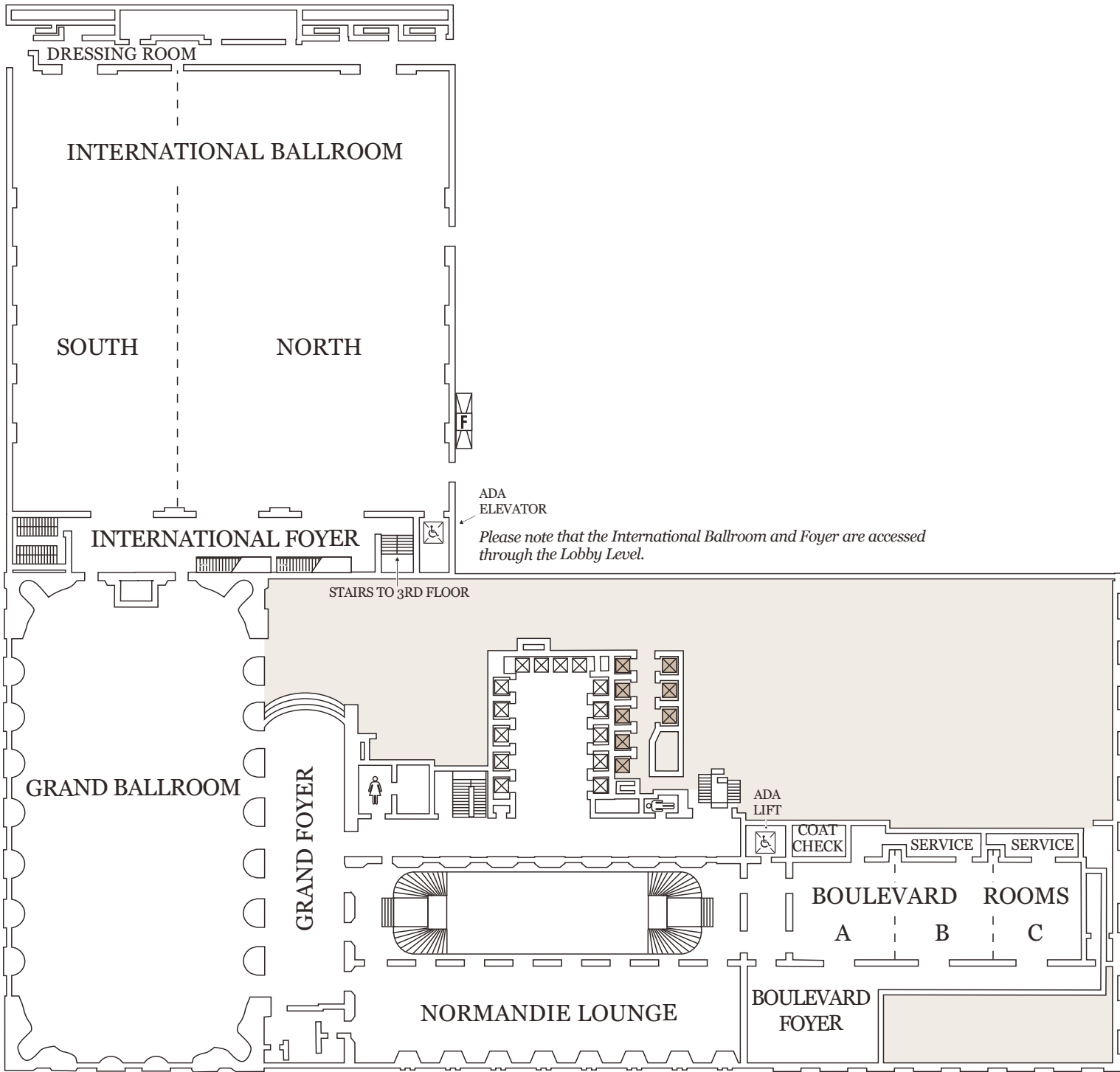
FREIGHT ELEVATOR 

ADA ELEVATORS 

STAIRS 

ESCALATORS 

LOBBY LEVEL



SECOND FLOOR

	DIMENSIONS [L W]	SQUARE FEET °	CEILING HEIGHT	CHANDELIER CL.	THEATER	SCHOOL ROOM 2/6'	SCHOOL ROOM 3/6'	BANQUET 10/60'	RECEPTION	CONFERENCE 2/6'	CONFERENCE 3/6'
GRAND BALLROOM	158'x80'	12,640	34'	15'3"	1,650	528	792	1,100	1,453	N/A	N/A
GRAND BALLROOM BALCONY	N/A	N/A	21'	N/A	200	N/A	N/A	160	180	N/A	N/A
GRAND BALLROOM FOYER	86'x29'	2,494	18'	8'9"	N/A	N/A	N/A	N/A	250	N/A	N/A
INTERNATIONAL BALLROOM	156'x141'	21,996	23'	19'4"	2,450	920	1,380	1,800	2,700	N/A	N/A
INTERNATIONAL NORTH	95'x141'	13,395	23'	19'4"	1,500	570	855	1,060	1,540	N/A	N/A
INTERNATIONAL SOUTH	61'x141'	8,601	23'	19'4"	920	334	501	680	900	N/A	N/A
INTERNATIONAL FOYER	18' x 103'	1,854	11'	8'	N/A	N/A	N/A	N/A	N/A	N/A	N/A
NORMANDIE LOUNGE	28'x130'	3,640	24'	12'	N/A	N/A	N/A	250	700	N/A	N/A
BOULEVARD ROOM	103'x32'	3,296	9'	8'6"	380	120	180	240	379	N/A	N/A
BOULEVARD A	36'x32'	1,152	9'	8'6"	100	36	54	80	120	20	28
BOULEVARD B	29'x32'	928	9'	8'6"	80	28	42	50	80	16	22
BOULEVARD C	38'x32'	1,216	9'	8'6"	120	40	60	80	130	20	28
BOULEVARD FOYER	30'x36'	1,080	9'	8'10"	N/A	N/A	N/A	N/A	125	N/A	N/A

° Usable square footage

ACCESSIBLE 

GUEST ELEVATOR 

SERVICE ELEVATOR 

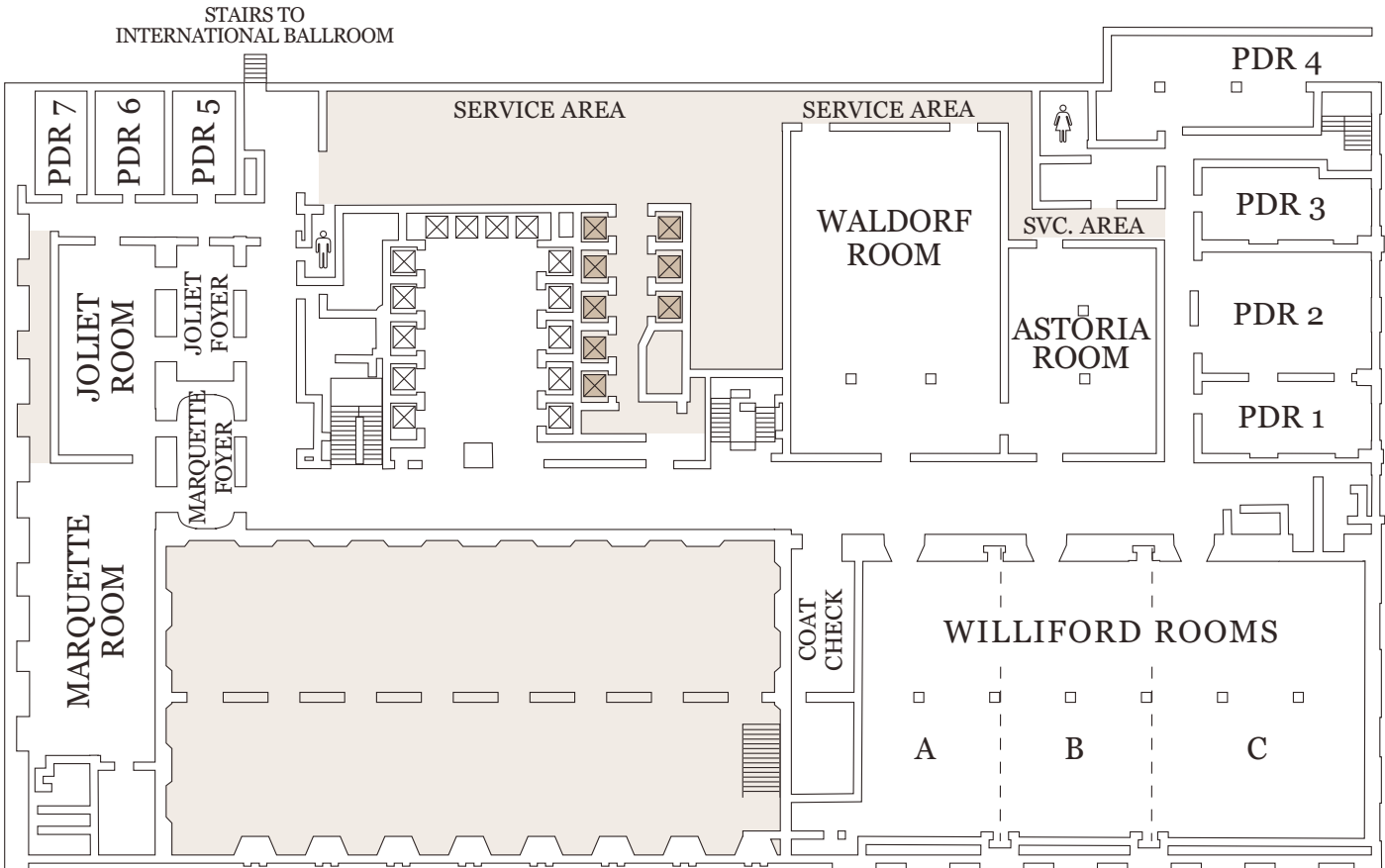
FREIGHT ELEVATOR 

ADA ELEVATORS 

STAIRS 

ESCALATORS 

SECOND FLOOR



THIRD FLOOR

	DIMENSIONS [L W]	SQUARE FEET °	CEILING HEIGHT	CHANDELIER CL.	THEATER	SCHOOL ROOM 2/6'	SCHOOL ROOM 3/6'	BANQUET 10/60"	RECEPTION	CONFERENCE 2/6'	CONFERENCE 3/6'
WALDORF ROOM	72'x48'	3,456	14' 9'11"	400	108	162	220	435	32	46	
ASTORIA ROOM	46'x33'	1,518	11' 9'6"	90	34	51	90	140	25	34	
WILLIFORD ROOM	116'x62'	7,192	9'6" 7'10"	610	200	300	650	850	N/A	N/A	
WILLIFORD A	34'x62'	2,108	9'6" 7'10"	187	66	99	160	240	30	40	
WILLIFORD B	34'x62'	2,108	9'6" 7'10"	187	66	99	160	240	30	40	
WILLIFORD C	48'x62'	2,976	9'6" 7'10"	236	100	150	280	342	46	64	
MARQUETTE ROOM	65'x31'	2,015	10' 7'11"	200	84	126	170	250	46	64	
JOLIET ROOM	46'x23'	1,058	10' 7'3"	80	40	60	80	135	30	40	
PDR #1	16'x40'	640	9'6" 7'5"	50	20	30	40	75	22	28	
PDR #2	28'x40'	1,120	9'6" 7'5"	90	48	72	80	150	24	34	
PDR #3	15'x40'	600	9'6" 7'2"	50	20	30	40	25	22	28	
PDR #4	27'x61'	1,647	9'6" 7'2"	60	26	39	50	75	22	28	
PDR #5	24'x15'	360	9'6" 7'5"	30	8	12	20	30	16	22	
PDR #6	24'x15'	360	9'6" 7'5"	30	8	12	20	30	16	22	
PDR #7	24'x15'	360	9'6" 7'5"	30	8	12	20	30	16	22	

COLUMN SIZES:

WALDORF ROOM 2'8" x 2'4"; ASTORIA ROOM 2'5" x 2'3"; WILLIFORD ROOM 2'6" x 2'6"; PRIVATE DINING ROOM #4 3' x 2'6"

° Usable square footage

ACCESSIBLE 

GUEST ELEVATOR 

SERVICE ELEVATOR 

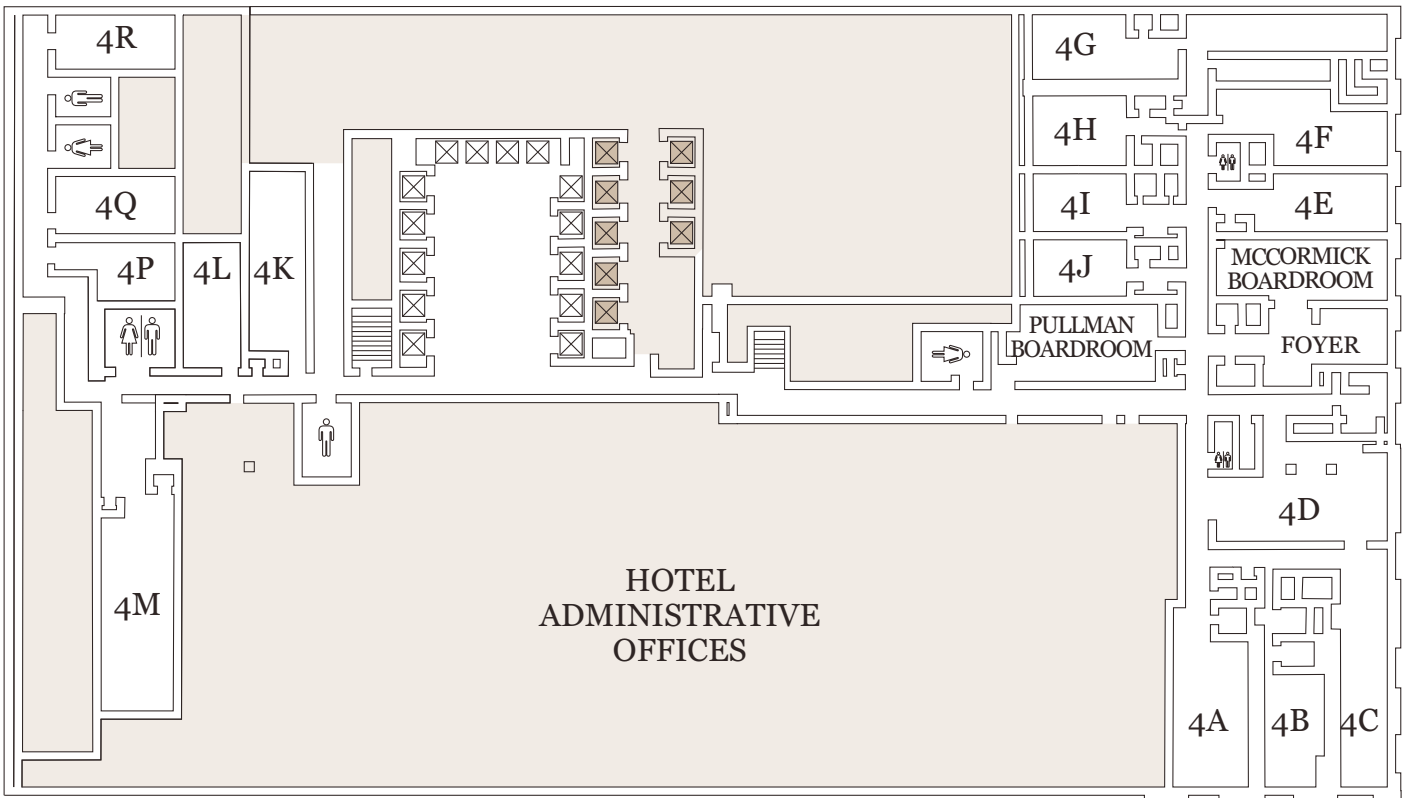
FREIGHT ELEVATOR 

ADA ELEVATORS 

STAIRS 

ESCALATORS 

THIRD FLOOR



FOURTH FLOOR

	DIMENSIONS [L W]	SQUARE FEET °	CEILING HEIGHT	CHANDELIER CL.	THEATER	SCHOOL ROOM 2/6'	SCHOOL ROOM 3/6'	BANQUET 10/60"	RECEPTION	CONFERENCE 2/6'	CONFERENCE 3/6'
CONFERENCE ROOM 4A	32'x15'	480	8'1"	N/A	50	16	24	30	45	20	28
CONFERENCE ROOM 4B	27'x16'	432	8'1"	N/A	40	12	18	30	45	20	28
CONFERENCE ROOM 4C	52'x14'	728	8'1"	N/A	60	16	24	50	75	28	40
CONFERENCE ROOM 4D	40'x24'	960	8'1"	N/A	80	26	39	50	75	24	34
CONFERENCE ROOM 4E	27'x14'	378	8'1"	N/A	40	12	18	30	45	16	22
CONFERENCE ROOM 4F	27'x17'	459	8'1"	N/A	45	16	24	30	45	16	22
CONFERENCE ROOM 4G	28'x16'	448	8'1"	N/A	40	8	12	30	45	16	22
CONFERENCE ROOM 4H	23'x16'	368	8'1"	N/A	30	8	12	20	30	16	22
CONFERENCE ROOM 4I	23'x14'	322	8'1"	N/A	30	8	12	20	30	16	22
CONFERENCE ROOM 4J	25'x15'	375	8'1"	N/A	30	8	12	20	30	16	22
CONFERENCE ROOM 4K	40'x15'	600	8'1"	N/A	60	16	24	40	60	24	34
CONFERENCE ROOM 4L	29'x15'	435	8'1"	N/A	40	12	18	30	45	18	22
CONFERENCE ROOM 4M	45'x17'	765	8'1"	N/A	80	26	39	50	75	24	34
CONFERENCE ROOM 4P	18'x17'	293	8'6"	N/A	30	6	9	20	30	12	16
CONFERENCE ROOM 4Q	27'x14'	378	8'6"	N/A	52	18	27	30	45	16	22
CONFERENCE ROOM 4R	27'x14'	336	8'6"	N/A	36	8	12	30	45	16	22
MCCORMICK BOARDROOM	35'x17'	595	7'10"	N/A	N/A	N/A	N/A	N/A	N/A	22	28
PULLMAN BOARDROOM	30'x17'	510	7'10"	N/A	N/A	N/A	N/A	N/A	N/A	20	28

COLUMN SIZES: CONFERENCE ROOM 4D 3'7" x 2'1"

° Usable square footage

ACCESSIBLE



GUEST ELEVATOR



SERVICE ELEVATOR



FREIGHT ELEVATOR



ADA ELEVATORS



STAIRS



ESCALATORS

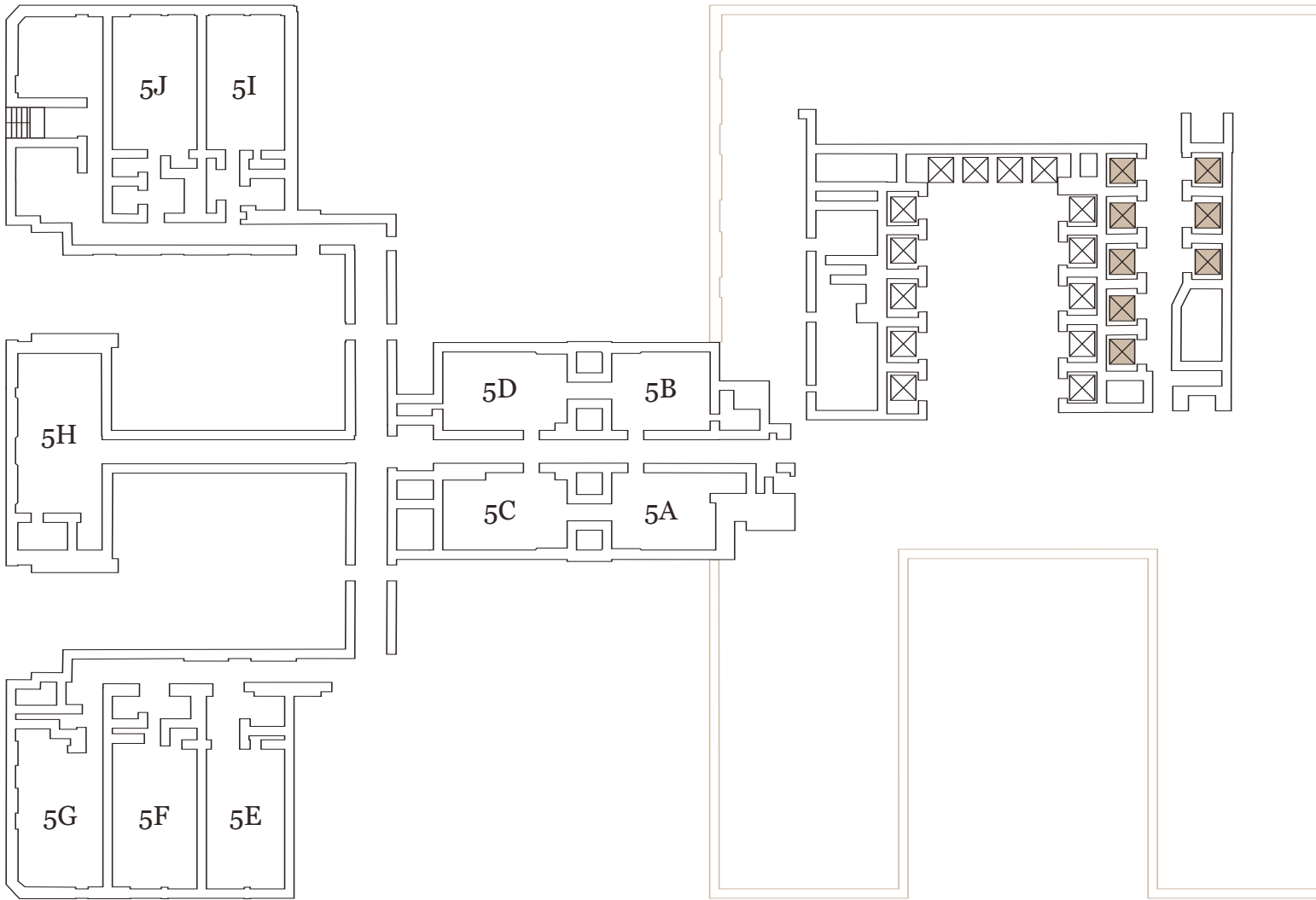


FOURTH FLOOR

FIFTH FLOOR

	<i>DIMENSIONS [L / W]</i>	<i>SQUARE FEET °</i>	<i>CEILING HEIGHT</i>	<i>CHANDELIER CL.</i>	<i>THEATER</i>	<i>SCHOOL ROOM 2/6'</i>	<i>SCHOOL ROOM 3/6'</i>	<i>BANQUET 10/60^o</i>	<i>RECEPTION</i>	<i>CONFERENCE 2/6'</i>	<i>CONFERENCE 3/6'</i>
CONFERENCE ROOM 5A	20'x13'	260	7'9"	N/A	18	8	12	20	20	12	16
CONFERENCE ROOM 5B	20'x13'	260	7'9"	N/A	18	8	12	20	20	12	16
CONFERENCE ROOM 5C	24'x13'	312	7'9"	N/A	18	8	12	20	20	12	16
CONFERENCE ROOM 5D	24'x13'	312	7'9"	N/A	18	8	12	20	20	12	16
CONFERENCE ROOM 5E	25'x14'	350	7'9"	N/A	25	12	18	20	34	16	22
CONFERENCE ROOM 5F	24'x14'	336	7'9"	N/A	30	12	18	30	39	16	22
CONFERENCE ROOM 5G	23'x14'	322	7'9"	N/A	36	12	18	20	37	16	22
CONFERENCE ROOM 5H	26'x15'	390	7'9"	N/A	32	14	21	30	43	16	22
CONFERENCE ROOM 5I	23'x13'	299	7'9"	N/A	25	12	18	20	34	16	22
CONFERENCE ROOM 5J	23'x14'	322	7'9"	N/A	36	12	18	20	37	16	22

° Usable square footage



ACCESSIBLE



GUEST ELEVATOR



SERVICE ELEVATOR



FREIGHT ELEVATOR



ADA ELEVATORS



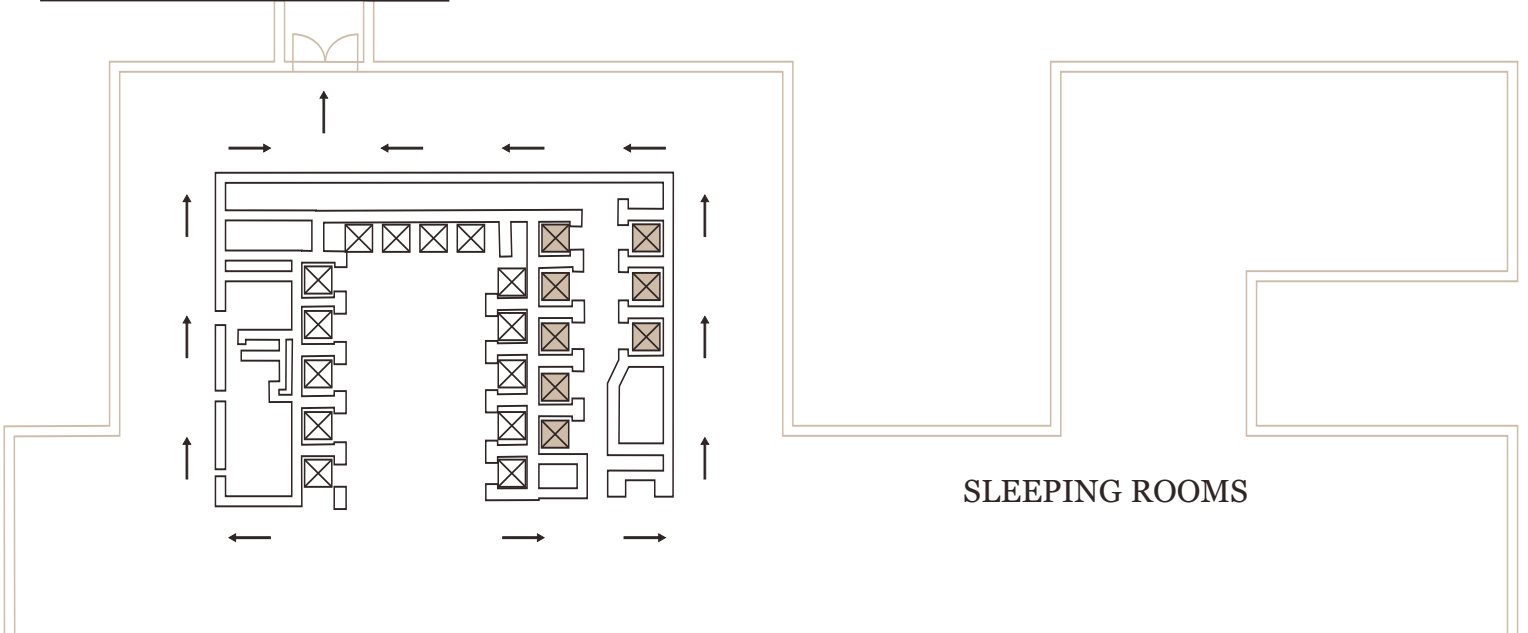
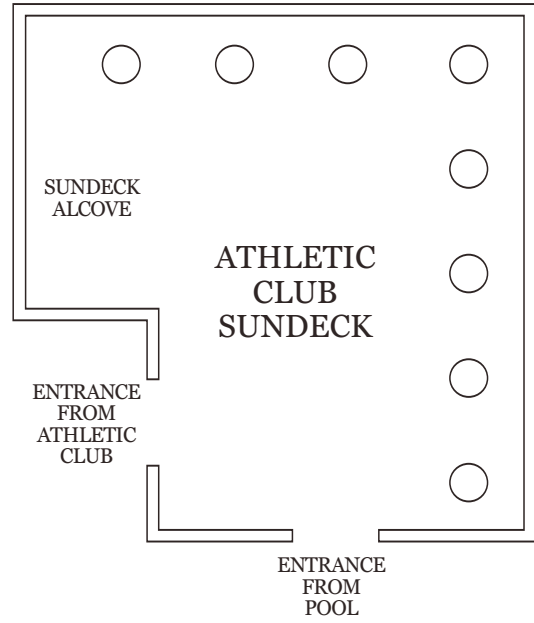
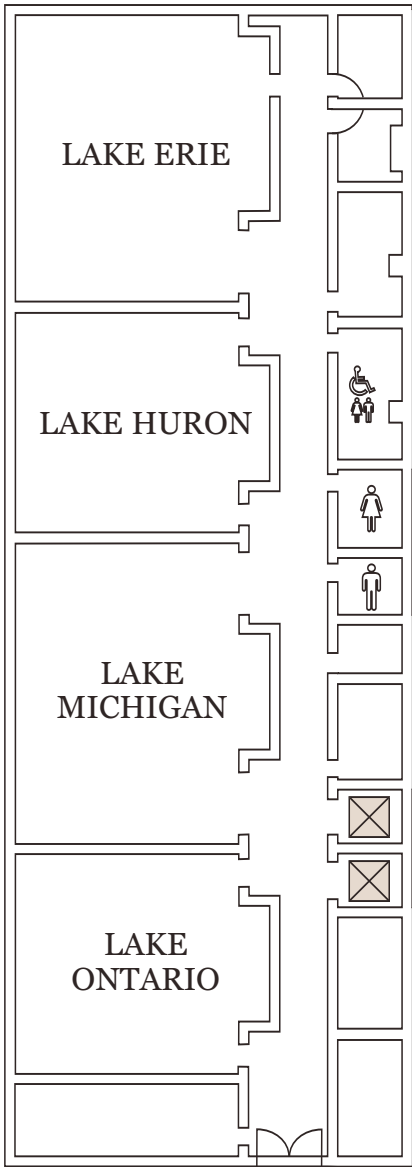
STAIRS



ESCALATORS



FIFTH FLOOR



EIGHTH FLOOR

	DIMENSIONS [L W]	SQUARE FEET °	CEILING HEIGHT	CHANDELIER CL.	THEATER	SCHOOL ROOM 2/6'	SCHOOL ROOM 3/6'	BANQUET 10/60'	RECEPTION	CONFERENCE 2/6'	CONFERENCE 3/6'
LAKE ONTARIO	30'x31'	930	8'	N/A	90	32	48	70	120	20	28
LAKE MICHIGAN	40'x31'	1,240	8'	N/A	140	40	60	90	150	24	34
LAKE HURON	30'x31'	930	8'	N/A	90	32	48	60	120	20	28
LAKE ERIE	38'x31'	1,178	8'	N/A	130	40	60	90	150	22	28
ATHLETIC CLUB SUNDECK	62'x45'	3,360	N/A	N/A	N/A	N/A	N/A	50	50	N/A	N/A
SUNDECK ALCOVE	36'6"x15'6"	565	N/A	N/A	N/A	N/A	N/A	N/A	N/A	N/A	N/A

° Usable square footage

ACCESSIBLE 

GUEST ELEVATOR 

SERVICE ELEVATOR 

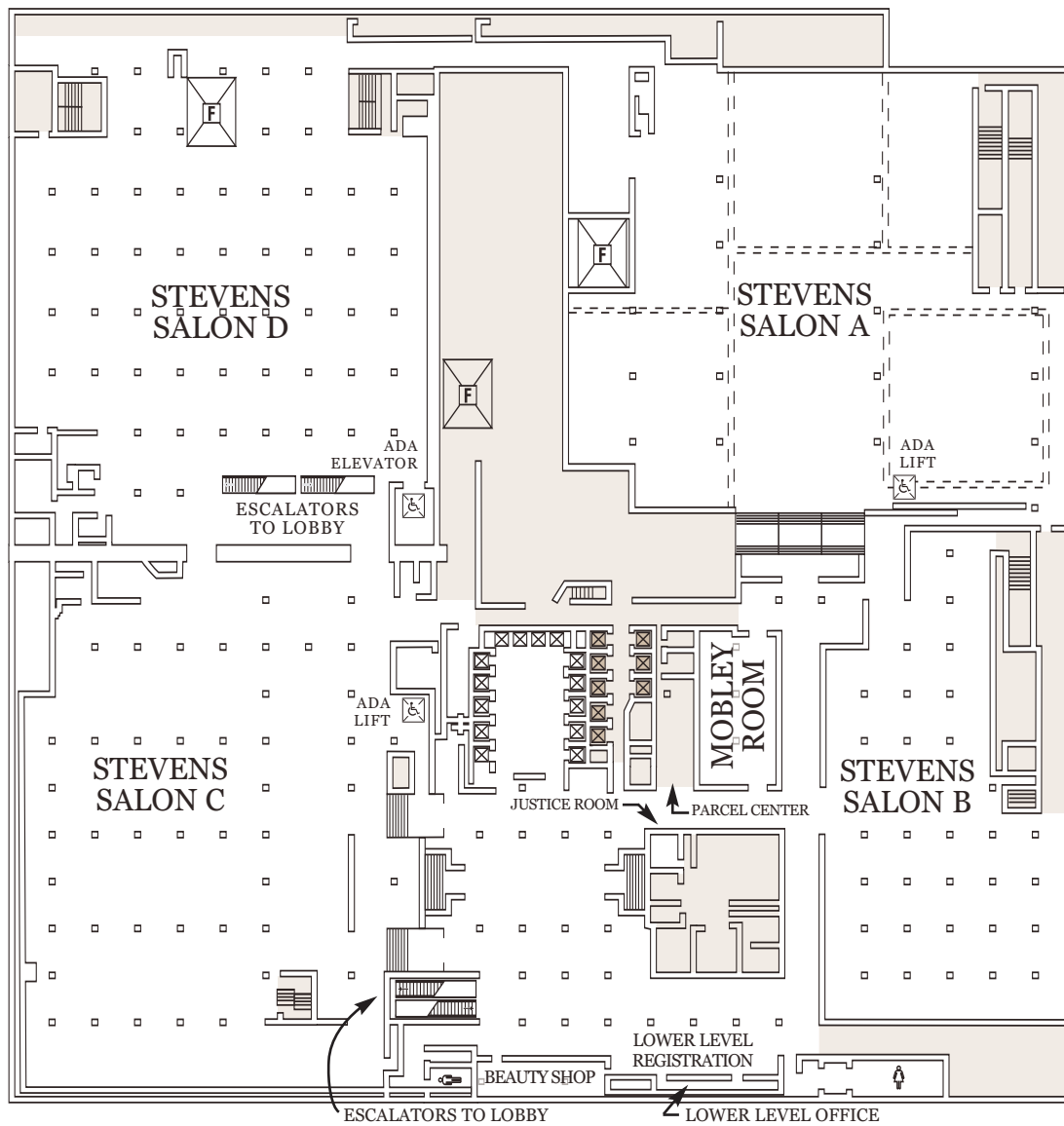
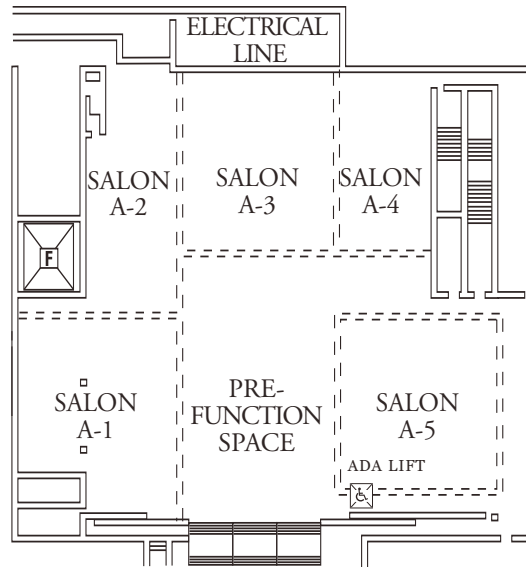
FREIGHT ELEVATOR 

ADA ELEVATORS 

STAIRS 

ESCALATORS 

EIGHTH FLOOR



STEVENS MEETING CENTER

	GROSS SQ. FT.	8'X10' (WxL)	10'X10' (WxL)	CEILING HEIGHT MAX. •	CEILING HEIGHT MIN.	FLOOR LOAD	FLOOR SURFACE			
SALON A	40,140	144	139	11'4"	10'	100 lbs/sq ft	Carpet			
SALON B	15,000	52	51	9'6"	8'4"	100 lbs/sq ft	Carpet			
SALON C	28,906	88	98	13'	12'	100 lbs/sq ft	Carpet			
SALON D	34,884	113	108	10'	8'9"	100 lbs/sq ft	Carpet			
MOBLEY ROOM	34'x58'	1,972	8'6"	N/A	N/A	80	150	N/A	N/A	N/A
JUSTICE ROOM	16'x20'	320								
LOWER LEVEL REGISTRATION	69'10"x14'	977								

• Ceiling height under airwalls is 10'2"

SALON A

	DIMENSIONS [L W]	SQUARE FEET °	CEILING HEIGHT *	THEATER	SCHOOLROOM 2/6'	SCHOOLROOM 3/6'	BANQUET 10/60"	RECEPTION *	CONFERENCE	8' X 10' EXHIBITS	10' X 10' EXHIBITS
SALON A	195' X 200'	40,140	11'4"	2,950	570	699	2,000	3,000	N/A	144	139
SALON A-1	55' X 62'	3,844	11'4"	350	120	180	300	360	40	N/A	N/A
SALON A-2	82' X 46'	3,772	11'4"	350	120	180	300	360	40	N/A	N/A
SALON A-3	54' X 54'	2,916	11'4"	325	106	159	250	340	40	N/A	N/A
SALON A-4	54' X 41'	2,214	11'4"	275	92	138	190	300	30	N/A	N/A
SALON A-5	65' X 61'	3,965	11'4"	400	132	198	320	425	40	N/A	N/A

° Usable square footage

* Ceiling height under airwalls is 10'2"

ACCESSIBLE



GUEST ELEVATOR



SERVICE ELEVATOR



FREIGHT ELEVATOR



ADA ELEVATORS



STAIRS



ESCALATORS



LOWER LEVEL

Four-bay loading dock on Wabash Avenue. All cars support a maximum capacity of 20,000 lbs.

BAY 1:

- Serviced by Car #28. Access from Wabash Avenue. Dimensions of fold-down metal door is 12'H x 15'5"W. This car serves all four Salons in the Stevens Meeting Center.

BAY 2:

- Serviced by Car #25 and additional service elevators. Access from Wabash Avenue. Dimensions of roll-down metal doors are 11'9"H x 12'4"W and 12'H x 12'5"W. Height of staging area is 3'4". This car serves the Grand Ballroom, International Ballroom, and Stevens Salon C.

BAY 3:

- Serviced by Car #25 and additional service elevators. Access from Wabash Avenue. Dimensions of roll-down metal doors are 11'9"H x 12'4"W and 12'H x 12'5"W. Height of staging area is 3'4". This car serves the Grand Ballroom, International Ballroom, and Stevens Salon C.

BAY 5:

- Serviced by Car #27. Sidewalk access from Wabash Avenue. Freight car is located south of main loading dock area. Interior dimensions of car are: 27'3"L x 11'10"W x 9'10"H. Dimensions of doors are 9'10"H x 12'W. This car serves the Continental Ballroom and Stevens Salons A, C, and D.

PERMANENT SCREENS

- International Ballroom - (3) 20' x 18' electric screens centered on west wall
- Grand Ballroom - 20' x 20' electric screen centered on east wall
- McCormick Board Room - 8' x 8' electric screen centered on south wall
- Pullman Board Room - 8' x 8' electric screen centered on south wall

DANCE FLOORS

- Portable dance floors can be set in any desired room. Each section measures 4' x 4'.

PREFUNCTION SQUARE FOOTAGE

LOBBY LEVEL

- Continental Room Foyer - 144' x 25' = 3,600 sq. ft.

SECOND FLOOR

- Grand Foyer - 86' x 29' = 2,494 sq. ft.
- International Foyer - 103' x 18' = 1,854 sq. ft.
- Normandie Lounge - 28' x 130' = 3,640 sq. ft.
- Boulevard Foyer - 36' x 30' = 1,080 sq. ft.

THIRD FLOOR

- Marquette Foyer - 28' x 13' = 364 sq. ft.
- Joliet Foyer - 33' x 13' = 429 sq. ft.

COLUMN SIZES

LOWER LEVEL – STEVENS MEETING CENTER

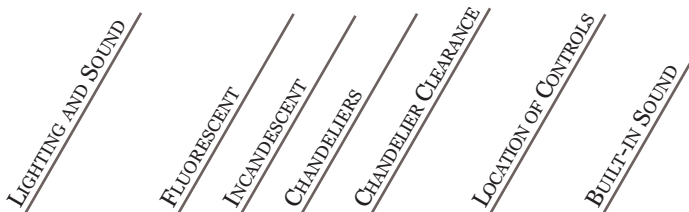
- Stevens Salon A 4'4" x 3'4"
- Stevens Salon B 3' x 2'6"
- Stevens Salon C 4'6" x 4'6" - 5'
- Stevens Salon D 2'2" x 2'2" - 2'8"

THIRD FLOOR

- PDR 4 3' x 4'
- Williford Room 2'6" x 2'6"
- Waldorf Room 2'8" x 2'4"
- Astoria Room 2'5" x 2'3"

FOURTH FLOOR

- Conference Room 4D 3'7" x 2'1"



Lower Level:			
Stevens Meeting Center			
Salons A, B, C, D	■		Inside door
Mobley Room		■	In pillar
Lobby Level:			
Continental Room A,B,C	■	■	13'
Grand Tradition			Inside door
Second Floor:			
Grand Ballroom		■	14'
International Ballroom	■	■	19'
Boulevard Room A,B,C	■		
Normandie Lounge	■	■	14'
Third Floor:			
Waldorf Room		■	9'3"
Astoria Room		■	8'5"
Williford Room A,B,C	■	■	8'
Marquette Room		■	8'
Joliet Room	■	■	7'4"
PDR 1-4	■	■	7'3"-7'6"
PDR 5-7	■	■	7'5"
Fourth Floor:			
4-A,B,E,F,G,H,I,J,K,L	■		Inside door
4-C,D,M	■		Inside door
Fifth Floor:			
All rooms (A-J)	■		Inside door
Eighth Floor:			
Lake Ontario Room	■		Inside door
Lake Michigan Room	■		Inside door
Lake Huron Room	■		Inside door
Lake Erie Room	■		Inside door

EIGHTH FLOOR

- LAKE ONTARIO
- LAKE MICHIGAN
- LAKE HURON
- LAKE ERIE

FIFTH FLOOR

- CONFERENCE ROOMS 5A-5J

FOURTH FLOOR

- CONFERENCE ROOMS 4A-4R
- McCORMICK BOARDROOM
- PULLMAN BOARDROOM

THIRD FLOOR

- WALDORF
- ASTORIA
- WILLIFORD
- MARQUETTE
- JOLIET
- PRIVATE DINING ROOMS 1-7

SECOND FLOOR

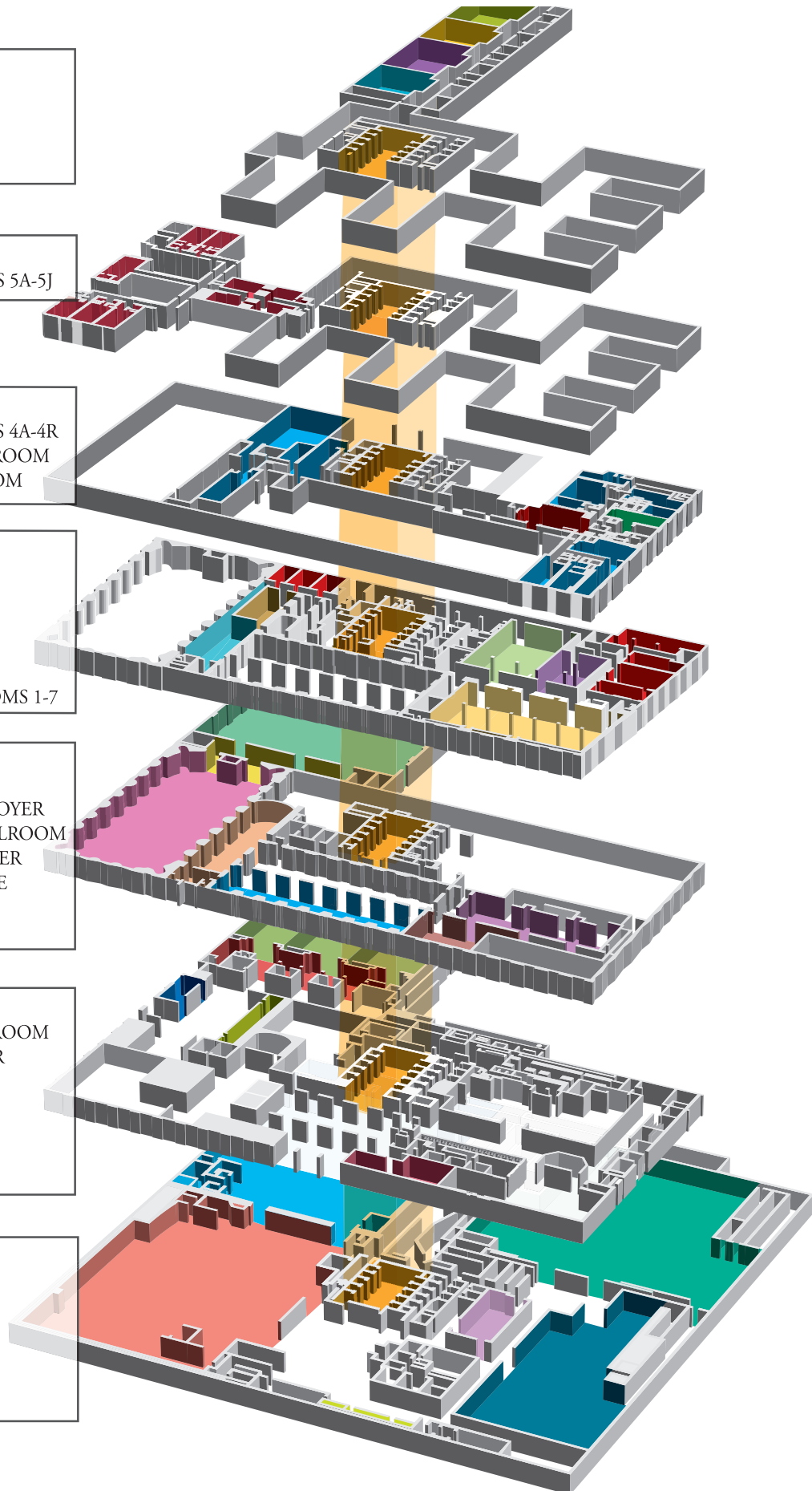
- GRAND BALLROOM
- GRAND BALLROOM FOYER
- INTERNATIONAL BALLROOM
- INTERNATIONAL FOYER
- NORMANDIE LOUNGE
- BOULEVARD ROOM
- BOULEVARD FOYER

LOBBY LEVEL

- CONTINENTAL BALLROOM
- CONTINENTAL FOYER
- GRAND TRADITION
- 8th STREET SOUTH REGISTRATION
- 8th STREET NORTH REGISTRATION

LOWER LEVEL

- SALON A
- SALON B
- SALON C
- SALON D
- MOBLEY ROOM
- REGISTRATION





720 South Michigan Avenue Chicago IL 60605 312-922-4400
www.HiltonChicagoHotel.com